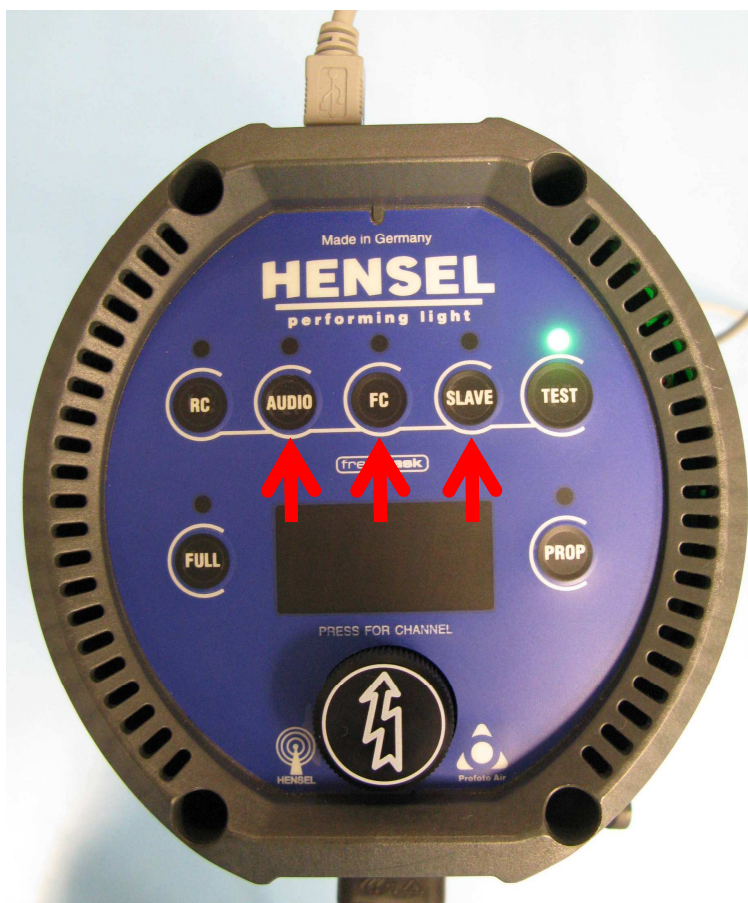



Programming instruction for EXPERT D (Windows)

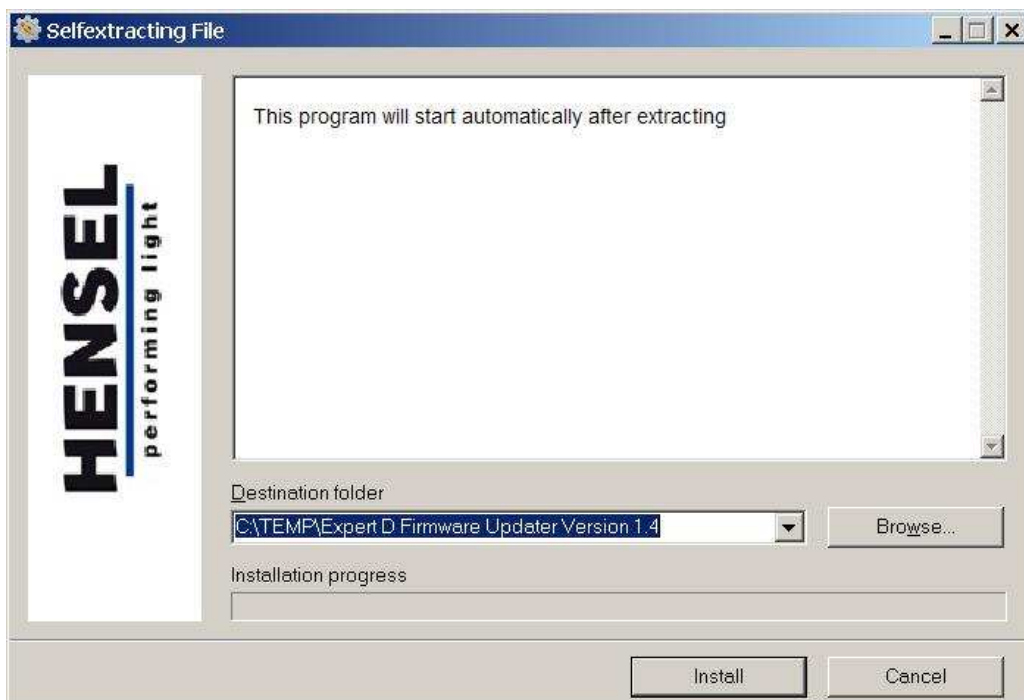


Connect the unit by the USB socket with the computer before switching on.



Press the three with red arrows marked push-buttons with switched off Expert D unit and then switches the unit on. The green ready LED lights up. Programming mode of the Expert D is now active. If for the first time an Expert D is stuck on to a computer, you receive the message at the computer „the new hardware was found “. Please wait until the new hardware is installed.

	<p>Start the application „Firmware Updater Expert D Version X.X.exe“</p>
<p>Firmware Updater Expert D Version 1.4.exe</p>	



If the equipment is correctly attached, the adjacent opinion appears. Click on the button „Install“. The program unpacks the required files into the temporary register „C:\TEMP\Expert D Firmware Updater Version X.X“ and starts automatically.



If the unit is not connected to the computer or is not in the programming mode, you receive the left shown window.

If that is the case, please attach equipment now and activate the programming mode, as described above.



If the equipment were attached correctly, the above window appears. For programming click on the button „start”. While programming runs, do not switch off the computer or separate the equipment!

